

VXC, VXC-F, VXC-S Revit Family

This operation manual will explain how to set VXC4, VXC6, VXC8, VXC2F, VXC3F, VXC5F, and VXC8S “Family” in a “Project.”

VXC4, VXC6, VXC8, VXC2F, VXC3F, VXC5F, and VXC8S (*.rfa) are the “Family” for ceiling mount. These “Family” are created by Revit 2016 version.

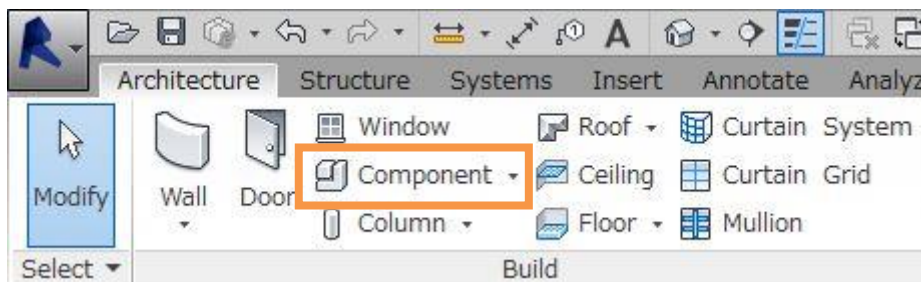
To set Family for VXC4, VXC6, VXC8, VXC2F, VXC3F, VXC5F, VXC8S

1) Load “Family”.

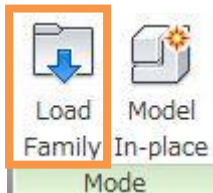
Note

The “Family” for ceiling cannot be placed without a ceiling.
Please set the reflected ceiling plan.

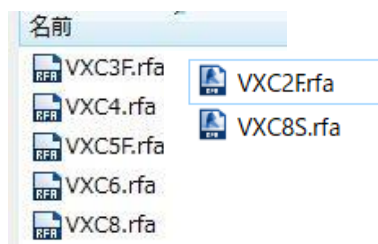
Click “Architecture”, then “Component”.



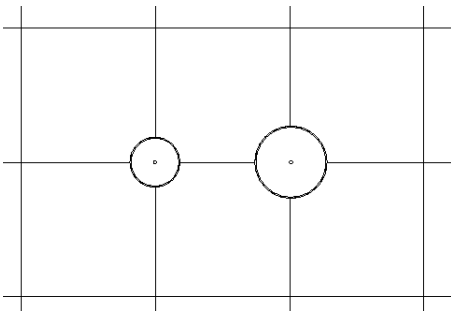
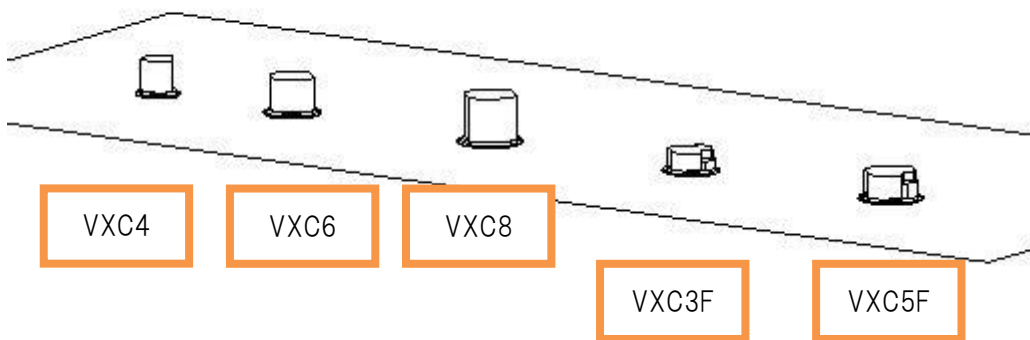
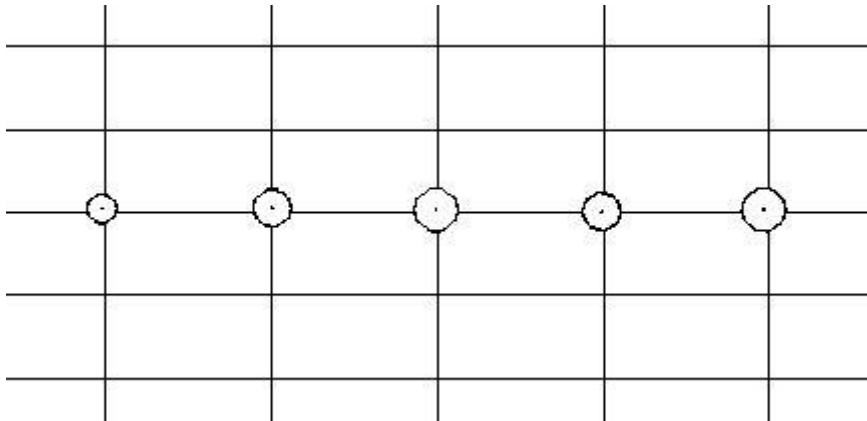
Click “Load Family” from the “Mode” panel.



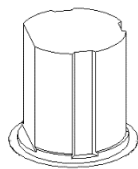
Select from “VXC4”, “VXC6”, “VXC8”, “VXC2F”, “VXC3F”, “VXC5F”, and “VXC8S (*.rfa)”.



2) Place the Family onto the ceiling.



VXC2F



VXC8S

3) There are two types of “Family” for ceiling mount.

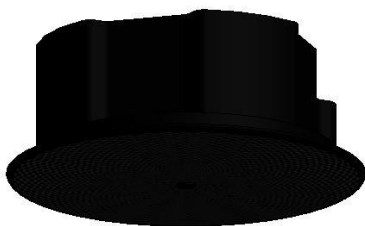
Select the type of family from the “Type Selector”.



VXC4
VXC6
VXC8



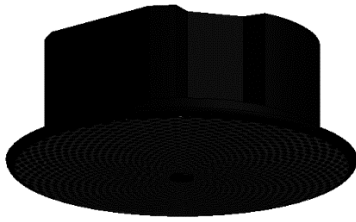
VXC4W
VXC6W
VXC8W



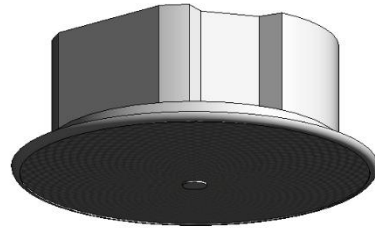
VXC3F
VXC5F



VXC3FW
VXC5FW



VXC2FB



VXC2FW



VXC8SB



VXC8SW

4) For the specification of the speaker, check from the “Type Properties “.

Type Properties

Family: VXC4 Load...

Type: VXC4W Duplicate... Rename...

Type Parameters

Parameter	Value
Materials and Finishes	
body	ABS-white
cover	perforated aluminum-white
Dimensions	
Width	φ225mm (8.9")
Height	195mm (7.7")
Depth	φ225mm (8.9")
Identity Data	
Manufacturer	Yamaha
Model	VXC4/VXC4W
IQ Category	Loudspeakers
Manufacturer URL	https://www.yamaha.com
Product Page URL	https://www.yamaha.com/proaudio/
Product Documentation Link	https://www.yamaha.com/proaudio/
A&E Specification	The loudspeaker shall be of in-ceiling
Other	
Sensitivity	87
Power Handling	60
SPL Max	105
Impedance	8
Coverage Horizontal	130
Coverage Vertical	130
70V Taps	30W, 15W, 7.5W, 3.8W
100V Taps	30W, 15W, 7.5W
Regulatory Compliance	-
Net Weight	2.6kg

*Note!

The material shown in the “Material and Finishes” in “Type Properties” are different from the material of the actual product.

Parameter	Value
Materials and Finishes	
body	ABS-white
cover	perforated aluminum-white