

# S30/S80 Specifications

FUNCTIONS	S30	S80
Keyboard	61 Keys, Initial Touch/Aftertouch	88 Keys (Weighted), Initial Touch/Aftertouch
Tone Generator	AWM2	AWM2
Multitimbres	16 + 1 (Plug-in)	16 + 1 (A/D) + 2 (Plug-in)
Polyphony	64 Notes	64 Notes
Effects	Reverb: 12 Chorus: 23 Insertion Effects: 92 Insertion Effects for Plug-in Boards: 24 Master Equalizer	Reverb: 12 Chorus: 23 Insertion Effects: 92 Insertion Effects for Plug-in Boards: 24 Master Equalizer
Voices	Preset Bank Normal: 256, drum kits: 8 User Bank Normal: 128 (Internal) + 128 (External) Drum kits: 2 (Internal) + 2 (External) Plug-in User Bank Normal: 64	Preset Bank Normal: 256, drum kits: 8 User Bank Normal: 128 (Internal) + 128 (External) Drum kits: 2 (Internal) + 2 (External) Plug-in User Bank Normal: 64 (Plug-in 1), 64 (Plug-in 2)
Performances	User Bank 128 (Internal) + 64 (External) 4 Zones per Master Keyboard Setting 17 Parts (16 + Plug-in) Part Layers: Max. 4 128 Types (MIDI Sync, MIDI TX/RX, Play Effect)	User Bank 128 (Internal) + 64 (External) 4 Zones per Master Keyboard Setting 19 Parts (16 + Plug-in 1 + Plug-in 2 + A/D) Part Layers: Max. 4 128 Types (MIDI Sync, MIDI TX/RX, Play Effect)
Arpeggiator	SMF Playback (Direct Play Only)	SMF Playback (Direct Play Only)
Sequencer	1 Slot for Plug-in Board	2 Slots for Plug-in Boards
Expandability	Quick Access Program Change (8 Categories) [A.PIANO], [E.PIANO], [ORGAN], [GUITAR & BASS], [STRINGS], [BRASS], [SYNTH-], [OTHERS]	Quick Access Program Change (8 Categories) [A.PIANO], [E.PIANO], [ORGAN], [GUITAR & BASS], [STRINGS], [BRASS], [SYNTH-], [OTHERS]
Other		
<b>EXTERNAL MEMORY</b>		
Card	SmartMedia™ (3.3V)	SmartMedia™ (3.3V)
<b>CONTROLLERS</b>		
Pitch Bend Wheel	1	1
Modulation Wheel	1	1
Assignable Sound Control Slider	4	4
Volume Slider	1	1
Assignable Knob	5	5
Data Entry/Page Knob	2	2
A/D Gain	—	1
<b>CONNECTORS &amp; TERMINALS</b>		
OUTPUT	L/MONO, R (1/4" Jack)	L/MONO, R (1/4" Jack)
INDIVIDUAL OUTPUT	—	2 (1/4" Jack)
A/D INPUT	—	1 (1/4" Jack)
BREATH CONTROLLER	—	1
FOOT VOLUME	—	1
FOOT CONTROLLER	1	1
SUSTAIN	—	1
FOOT SWITCH	1	1
MIDI	IN/OUT/THRU	IN/OUT/THRU
TO HOST	1 (Mini Din)	1 (Mini Din)
PHONES	1 (Stereo 1/4" Jack)	1 (Stereo 1/4" Jack)
<b>DIMENSIONS, WEIGHT</b>		
	1,001 (W) x 345 (D) x 99 (H) mm, 8kg 39 7/16" x 13 9/16" x 3 7/8", 17.6 lbs.	1,329 (W) x 371 (D) x 157 (H) mm, 24.3kg 52 5/16" x 16 5/8" x 6 3/16", 53 lbs. 8oz.
<b>ACCESSORIES</b>		
CD-ROM	1	1

Descriptions and photographs in this brochure are for informational purposes only. Specifications are subject to change without notice. SmartMedia is a trademark of Toshiba Corporation.



# MUSIC SYNTHESIZER Modular Synthesis Plug-in System

# S30 S80



If Music is Your Vehicle of Expression... Here Are Your Keys.



For details please contact:

This document is printed on chlorine free (ECF) paper.



ISO9001  
JQA-1868



# YAMAHA

YAMAHA CORPORATION  
P.O. BOX 1, Hamamatsu Japan

Printed in Japan

# MODULAR SYNTHESIS PLUG-IN SYSTEM

Whether you play in small clubs or large concert halls, these synths are your ideal on-stage music partners. They're loaded with the most commonly used sounds for live playing—including a huge selection of pianos, organs, brass, strings and more. And by simply inserting a SmartMedia™ card into the back of the keyboard, you'll have an entire extra bank of Voices and Performances at your fingertips. Master Keyboard mode gives you direct control of each voice part during your performance and Quick Access buttons make it easy to quickly find your favorite sounds on stage.

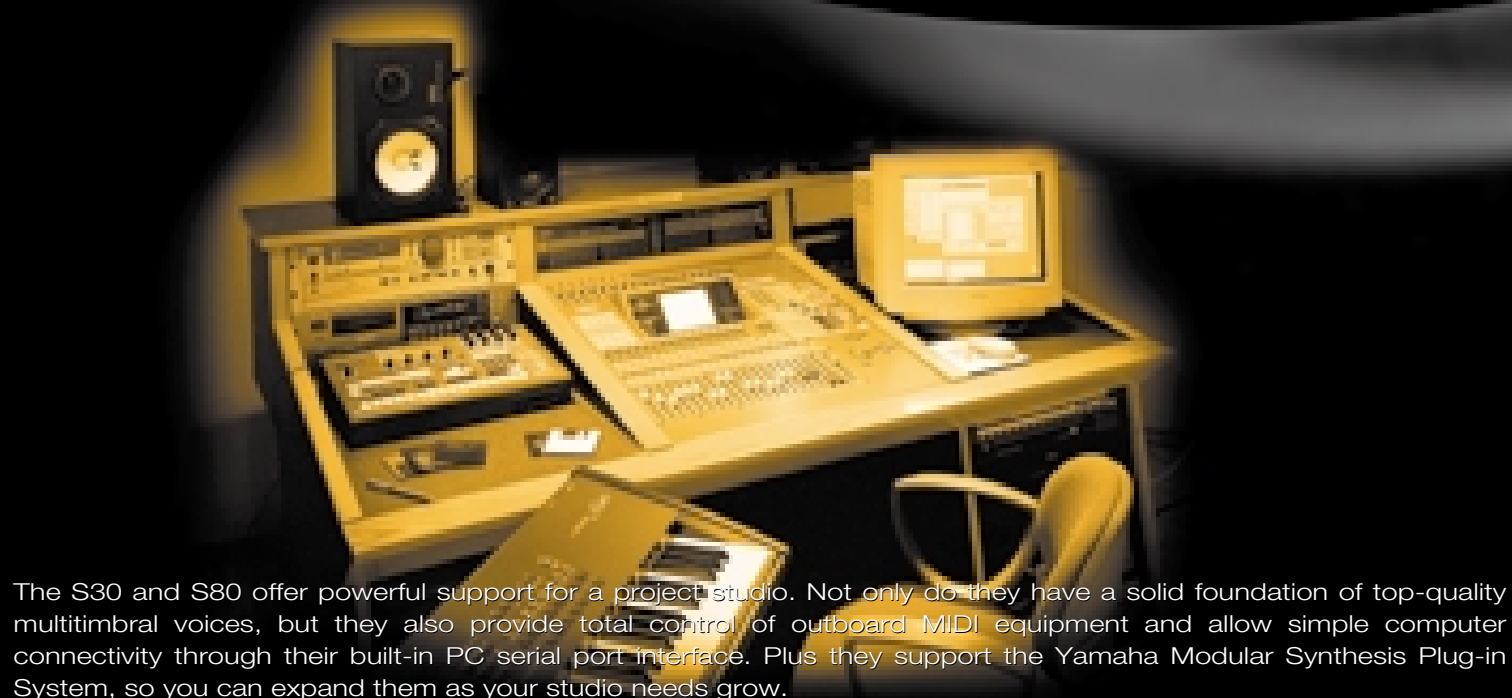
Comprehensive MIDI capability. Superb voice quality. Unparalleled expandability. All these features make these keyboards the instruments of choice for professional recording studios. Music producers will appreciate being able to fully control external MIDI gear from one easy-to-use keyboard, and studio musicians are sure to fall in love with their expressive voices.



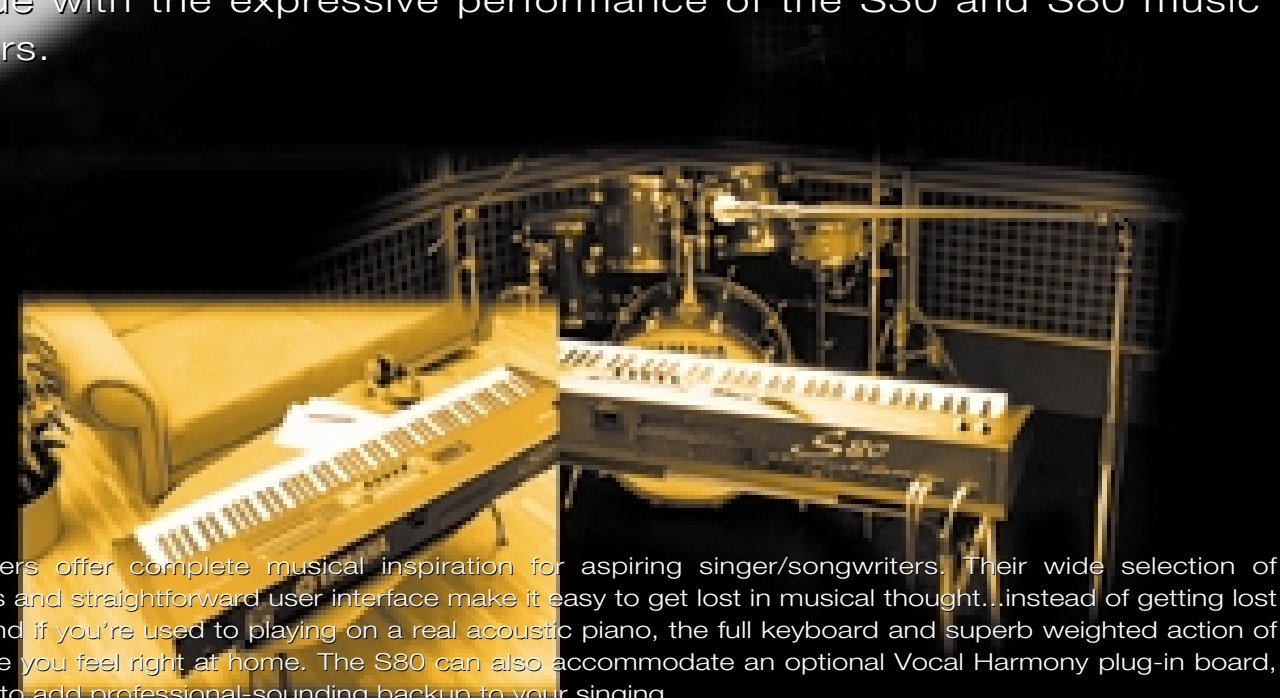
**Sophisticated**  
**S30**  
**S80**

**Inspiration for Your Music Scene**

Professional performer. Studio musician. Home hobbyist. Whatever your music scene may be, the Yamaha S30 and S80 give you the features and versatility you need to sound your best. They offer an impressive selection of familiar voices, 64 notes of polyphony and 16 multitimbral parts. And when your music calls for a different tonal perspective, Yamaha's Modular Synthesis Plug-in System opens the door to new and exciting synthesizer possibilities. So grab the keys and take yourself for a musical ride with the expressive performance of the S30 and S80 music synthesizers.



The S30 and S80 offer powerful support for a project studio. Not only do they have a solid foundation of top-quality multitimbral voices, but they also provide total control of outboard MIDI equipment and allow simple computer connectivity through their built-in PC serial port interface. Plus they support the Yamaha Modular Synthesis Plug-in System, so you can expand them as your studio needs grow.



These synthesizers offer complete musical inspiration for aspiring singer/songwriters. Their wide selection of expressive voices and straightforward user interface make it easy to get lost in musical thought...instead of getting lost in the manual. And if you're used to playing on a real acoustic piano, the full keyboard and superb weighted action of the S80 will make you feel right at home. The S80 can also accommodate an optional Vocal Harmony plug-in board, making it a snap to add professional-sounding backup to your singing.

## Top-Quality Selection of Essential Voices

In developing the S30 and S80, Yamaha was determined to satisfy the discriminating ears of true keyboard players. Consequently, their onboard sounds are some of the best available on the market today. All the essential voices you use most—organs, brass, strings, guitars and basses and, of course, a complete collection of pianos (including stereo-sampled pianos!)—are packed into their wave memory. Also included is a full array of high-quality drum sounds. And to ensure maximum expression and performance, these keyboards feature a dynamic digital effects processor and an incredible 64 notes of polyphony.

## Quick Access

Looking for a particular organ sound to fit the mix? The intuitive Quick Access feature gives you instant access to specific categories of voices, such as pianos, guitars and strings. With Quick Access, you can quickly find the type of sound you want without having to scroll through the onboard voices one at a time.

## Multi-Mode Resonant Filters

Resonant filters add dynamics and realism to a keyboard's sound and are a critical feature for any keyboard worthy of being called a synthesizer. The S30 and S80 take the filter concept to a whole new level by giving you 12 types of "multi-mode" resonant filters. Multi-mode filters allow you to assign a combination of filters to a voice; a low pass and high pass filter, for example. Not only does this provide you with more expressive, authentic-sounding voices, but it adds more depth and punch to synthetic timbres as well.

# S30

## Impressive Features and Performance



## SmartMedia™ Storage

Conveniently store your Voice and Performance setups on ultra thin and compact SmartMedia™ cards. As well as giving you a much larger data storage capacity than a floppy disk, a SmartMedia™ card can also be used as an external memory bank for instant access to a wider selection of sounds.



## Ultimate MIDI Control

The S30 and S80 synthesizers give you complete control over your MIDI setup. Four assignable data sliders and five assignable data knobs are provided for realtime control over any MIDI parameter. Pitch and modulation wheels are also provided, as well as 4 programmable keyboard zones and channel aftertouch. Entire MIDI setups can be stored in any of the 128 memory locations for instant recall in the studio or on stage.

## Playback Sequencer

Both keyboards feature a built-in song sequencer that's capable of playing back Standard MIDI Files. By storing MIDI files onto a SmartMedia™ card, you can build up a library of up to one hundred songs, any of which can be instantly called up at the touch of a button. What's more, songs can include Keyboard Setups and Performances, and even be programmed for chained playback—extremely useful for playing live.

## Arpeggiator

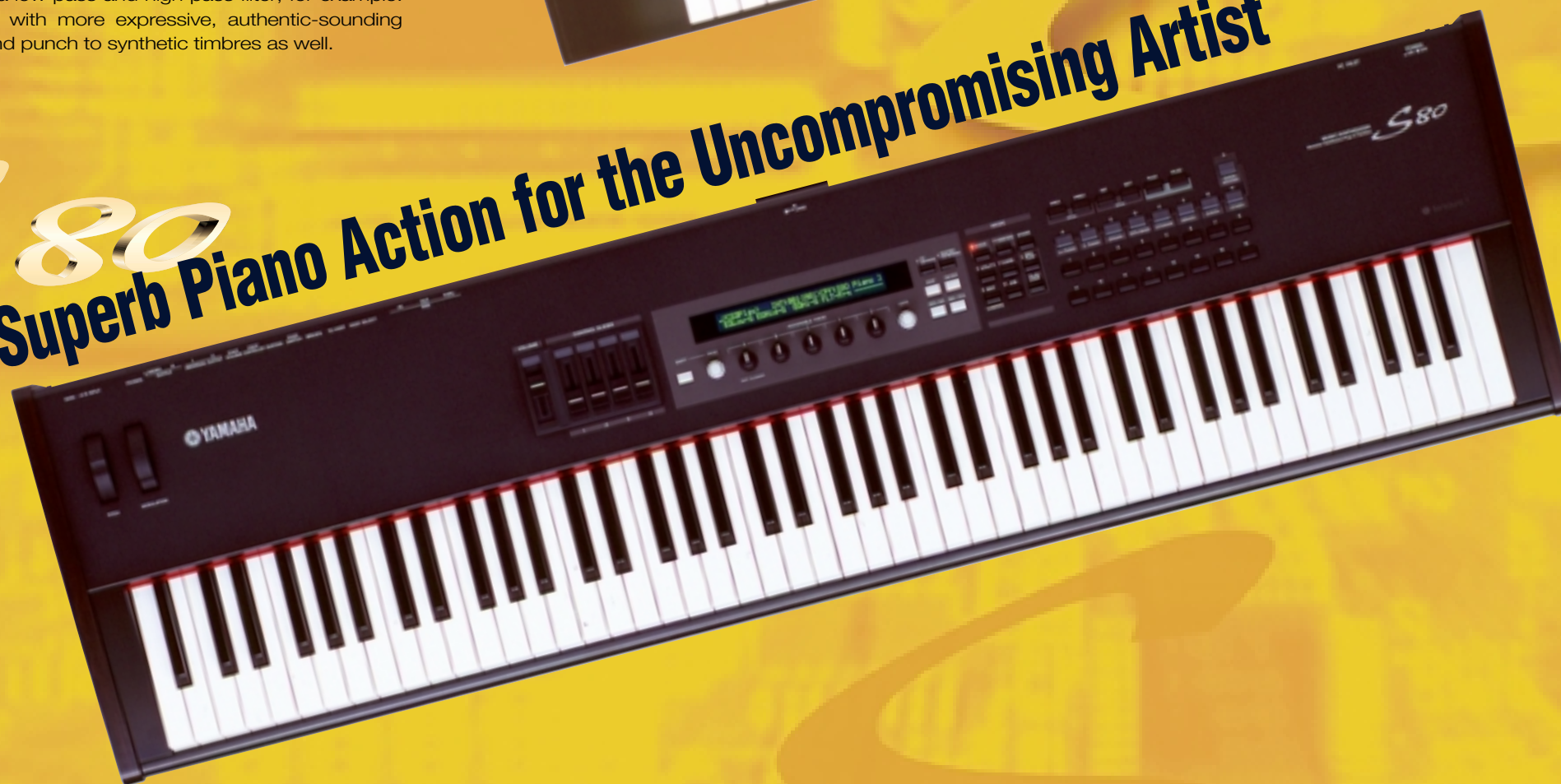
For added musical inspiration, these synthesizers are equipped with a MIDI arpeggiator. Along with standard arpeggiator sequences, such as Up, Down, and Up & Down, a wide variety of melodic phrase sequences and drum sequences are also included. Arpeggiator ON/OFF can be conveniently controlled via footswitch or MIDI control change.

## PC Serial Port Interface

A built-in TO HOST PC interface lets you connect the S30 and S80 to a personal computer, so you can take advantage of the wide variety of music software available on the market, including Yamaha's own XGworks music sequencing package and various Voice Editors for Modular Synthesis Plug-in System boards. The PC interface supports both Mac® and Windows® platforms.

# S80

## Superb Piano Action for the Uncompromising Artist



## Full-Size Keyboard with True Piano Action (s80)

For musicians who are used to playing on a real piano, the touch of the keyboard on the S80 is a dream come true. Engineers at Yamaha took great care in designing the keyboard to deliver the same feel and expression as that on a top-class acoustic piano. As a result, the S80 responds to the finest dynamics of your playing, from the lightest pianissimos to firmly struck fortissimos.

## A/D Input (s80)

The S80 features an A/D input into which you can run an external audio source, such as a guitar or microphone, and access the onboard effects. And by installing the optional PLG100-VH Modular Synthesis Plug-in Board, you can have the S80 back up your singing performance with impressive three-part vocal harmony.

# Sensational

## Included CD-ROM

Bundled with the S30 and S80 is a hybrid CD-ROM containing valuable synthesizer support software.

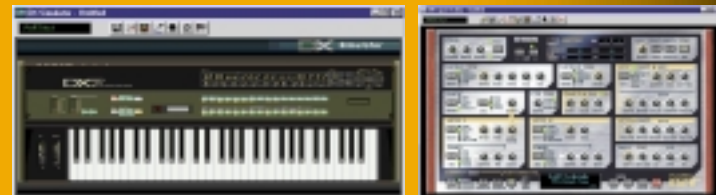
### • S80/S30 Voice Editor

This convenient software editor lets you visually edit the onboard voices on a personal computer.



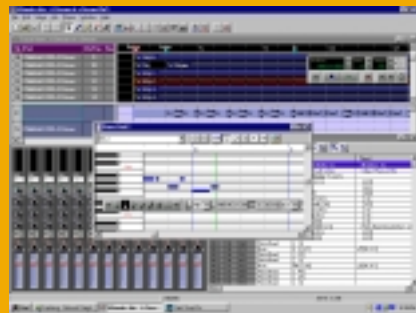
### • Voice Editors for Plug-in Boards

Voice editors for various Yamaha plug-in boards are included on the CD-ROM as well. (Most editors on the CD-ROM are software plug-ins for XGworks.)



### • XGworks lite (Windows® only)

This sequencing software gives you all the essential recording, editing and playback functions needed to create full-fledged songs using the S30/S80 and any other MIDI gear you may have.



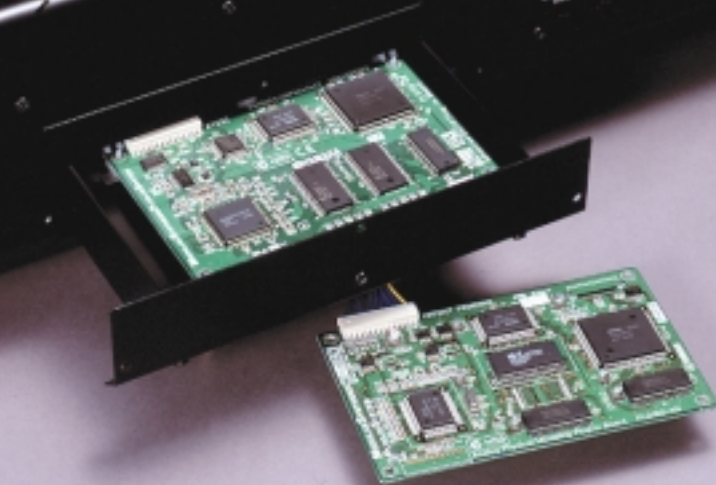
### • Card Filer

This handy utility lets you easily transfer data between a SmartMedia™ card and a PC. It also allows you to convert Standard MIDI Files from format 1 to format 0 for use with the S30/S80's SMF playback sequencer.



Note: Windows®/Macintosh® hybrid CD-ROM. Applications differ depending on platform. See your Yamaha dealer for details.

# MODULAR SYNTHESIS PLUG-IN SYSTEM



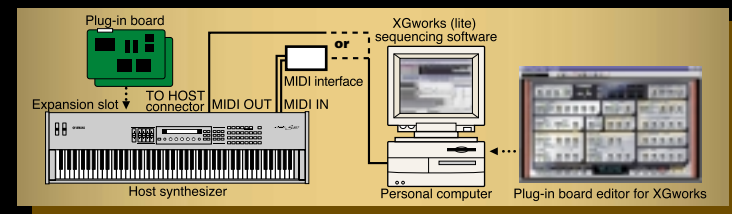
Note: Plug-in boards install from the bottom on the S30 and from the back panel on the S80.

## The S30 and S80 Are Ready to Upgrade with Yamaha's Modular Synthesis Plug-in System — Powerful Expansion Boards that:

- Expand your sound generation capabilities
- Increase your available polyphony
- Give you more multitimbral parts and effects
- Can be controlled from the host keyboard
- Come bundled with PC software for detailed voice editing

Yamaha's Modular Synthesis Plug-in System is a revolutionary expansion system that adds a COMPLETE SYNTHESIZER or SOUND PROCESSING ENGINE to your S30 or S80.

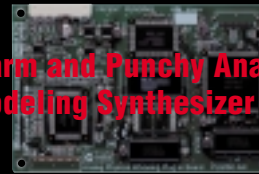
Once a plug-in board is installed, you can directly access any of its voices and edit them from the front panel of the S30/S80. You can also use a PC-based software editor (bundled with each plug-in board) to edit any of the voices in detail. Many voice parameters are MIDI controllable, which, when used in conjunction with MIDI sequencing software, allows you to record realtime edits, such as filter cutoff frequency and effect levels, for automated voice transformation during playback.



Note: Bundled editors are software plug-ins developed for XGworks sequencing software (Windows® 95/98).

## Analog Physical Modeling Plug-in Board PLG150-AN

Warm and Punchy Analog Modeling Synthesizer



### Analog Physical Modeling Synthesis

<b>Polyphony</b>	5 notes
<b>Voices</b>	256 Preset 128 User
<b>Effects</b>	Guitar Amp, Simulator (Distortion), 3-Band EQ, XG Part EQ
<b>Interface</b>	Plug-in Connector (15-pin digital I/F connector)
<b>Accessories</b>	FD (AN Easy Editor, AN Expert Editor, Demonstration Songs, Plug-in Voice Data for the CS6x/CS6R/S80/S30, Performance Data for the MU128)
<b>Dimensions (W) x (D) x (H)</b>	138.5 x 89.0 x 8.5 mm (5 9/16" x 3 5/8" x 3/8")
<b>Weight</b>	65 g (2.3 oz)

## Piano Plug-in Board PLG150-PF

Superb Pianos with 64 Notes of Dedicated Polyphony

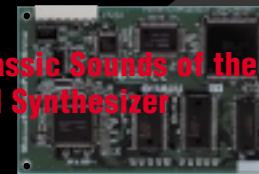


### AWM2

<b>Polyphony</b>	64 notes
<b>Voices</b>	136 Preset
<b>Effects</b>	Reverb, Chorus, Insertion, 2-Band EQ
<b>Interface</b>	Plug-in Connector (15-pin digital I/F connector)
<b>Accessories</b>	FD (PF Easy Editor, Demonstration Songs, Plug-in Voice Data for the CS6x/CS6R/S80/S30)
<b>Dimensions (W) x (D) x (H)</b>	138.5 x 89.0 x 8.5 mm (5 9/16" x 3 5/8" x 3/8")
<b>Weight</b>	72 g (2.5 oz)

## Advanced DX/TX Plug-in Board PLG150-DX

Classic Sounds of the DX-7 FM Synthesizer



### FM Synthesis

<b>Polyphony</b>	16 notes
<b>Voices</b>	912 Preset 64 User
<b>Effects</b>	Part EQ, Lowpass, Highpass
<b>Interface</b>	Plug-in Connector (15-pin digital I/F connector)
<b>Accessories</b>	CD-ROM (DX Easy Editor, DX Simulator), FD (Demonstration Songs, Plug-in Voice Data for the CS6x/CS6R/S80/S30, Performance Data for the MU128)
<b>Dimensions (W) x (D) x (H)</b>	138.5 x 89.0 x 8.5 mm (5 9/16" x 3 5/8" x 3/8")
<b>Weight</b>	63 g (2.2 oz)

## Virtual Acoustic Plug-in Board PLG150-VL

Ultra Expressive, Acoustic-like Voices



### Self-oscillating Virtual Acoustic Synthesis

<b>Polyphony</b>	1 note monophonic
<b>Voices</b>	256 Preset 70 User
<b>Interface</b>	Plug-in Connector (15-pin digital I/F connector)
<b>Accessories</b>	CD-ROM (VL Visual Editor), FD (Demonstration Songs, Plug-in Voice Data for the CS6x/CS6R/S80/S30, Performance Data for the MU128)
<b>Dimensions (W) x (D) x (H)</b>	138.5 x 89.0 x 8.5 mm (5 9/16" x 3 5/8" x 3/8")
<b>Weight</b>	56 g (2.0 oz)

## XG Plug-in Board PLG100-XG

Versatile XG Voices with 16 Additional Multi Parts



### AWM2

<b>Polyphony</b>	32 notes
<b>Voices</b>	480 Preset + 12 Drum Kits
<b>Effects</b>	Reverb, Chorus, Variation
<b>Connector</b>	Plug-in Connector (15-pin digital I/F connector)
<b>Accessories</b>	CD-ROM (XGworks lite V3.0, XG Editor for Mac), FD (Demonstration Songs)
<b>Dimensions (W) x (D) x (H)</b>	138.5 x 89.0 x 8.5 mm (5 9/16" x 3 5/8" x 3/8")
<b>Weight</b>	56 g (2.0 oz)

## Vocal Harmony Plug-in Board PLG100-VH

Beautiful 3-Part Vocal Harmony Processor\*



### Effect Processor

<b>Maximum Harmony</b>	3 voices
<b>Effects</b>	Vocoder Harmony, Detune Harmony Chordal Harmony, Chromatic Harmony
<b>Voice Control</b>	Gender change (male → female, female → male) Vibrato, Volume, Pan, Detune
<b>Interface</b>	Plug-in Connector (15-pin digital I/F connector)
<b>Dimensions (W) x (D) x (H)</b>	138.5 x 89.0 x 8.5 mm (5 9/16" x 3 5/8" x 3/8")
<b>Weight</b>	53 g (1.9 oz)

\*The PLG100-VH can be used only in models equipped with an A/D input; it cannot be used with the S30.