



DIGITAL MIXING CONSOLE

M7CL

V2.0

Supplementary
Manual

English

Deutsch

Français

Español

Italiano

Русский

EN
DE
FR
ES
IT
RU

This supplementary manual explains mainly the functionality that was changed or added in version 2.0 of the M7CL firmware. Please read this in conjunction with the M7CL V1.1 supplementary manual and the M7CL Owner's manual. You can download the most recent version of the Help file from the Yamaha website.

<http://www.yamahaproaudio.com/>

Main changes

■ Input channel operations

- Now the top panel faders can also be used to adjust the send levels from input channels to MATRIX buses (p. 3).
- In SENDS ON FADER mode, the send-destination MATRIX bus can now be selected by pressing the [MATRIX] navigation key and then pressing a [SEL] key in the Centralogic section (p. 3).
- The various channel parameters can now be saved together in internal memory as channel library data (p. 3).

■ Output channel operations

- The various channel parameters can now be saved together in internal memory as channel library data (p. 3).

■ Input/output patching

- You can now select POST ON (immediately after the fader and [ON] key) as the insert or direct output position (p. 4).
- When specifying or clearing a GEQ insertion, insert will now be turned on/off automatically (p. 4).

■ EQ and Dynamics

- The minimum level for an input channel's GATE threshold level is now -72 dB (p. 4).

■ Grouping and linking

- When you enable channel link, HA gain and fader operations will now be linked while maintaining the level difference between channels (p. 5).

■ Scene memory

- You can now use the Global Paste function to easily modify parameters across multiple scenes (p. 6).
- Recall Safe for the attenuator can now be selected independently of EQ (p. 7).

■ Monitor/Cue

- A monitor fader has been added to the monitor output level control, allowing you to use the STEREO MASTER fader / MONO MASTER fader to control the level (p. 5).

■ User settings

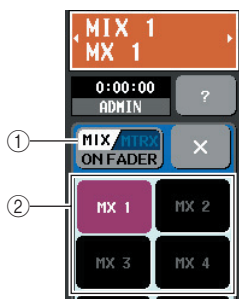
- M7CL V2 Editor now allows you to make the same user-defined key settings as on the console itself (p. 7).
- Additional functions are now available for assignment to the user-defined keys (p. 7).
- Regarding compatibility of data you create (p. 7).

Using the faders to adjust the send levels to the MATRIX buses (MATRIX ON FADER mode)

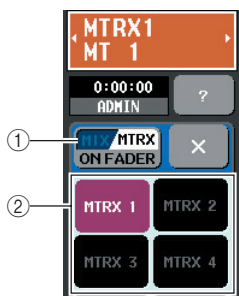
You can now use the top panel faders to adjust the send levels from input channels not only to MIX buses but also to MATRIX buses.

In SENDS ON FADER mode, you can now use the MIX/MTRX ON FADER button to switch between the MIX buses and MATRIX buses as the send destinations.

[When MIX ON FADER mode is ON]



[When MATRIX ON FADER mode is ON]



① MIX/MTRX ON FADER select button

Each time you press this button, you'll switch between MIX ON FADER mode and MATRIX ON FADER mode.

② MIX/MATRIX bus select button

Use these buttons to switch the send destination MIX bus or MATRIX bus. The buttons will be joined if two buses are set to stereo.

Using the Centralogic section's [SEL] keys to select a MATRIX bus

In SENDS ON FADER mode, the send-destination MATRIX bus can now be selected by pressing the [MATRIX] navigation key and then pressing a [SEL] key in the Centralogic section.

Input/output channel library support

Until now, EQ and dynamics were managed as individual libraries, but now the channel parameters (including HA settings) can be managed together in units of channels as channel library data, and stored, recalled, or cleared from internal memory.

You can recall 200 different settings each from the input channel library and the output channel library. For both input and output libraries, only 000 (Initial Data) is a read-only preset.

The basic operations are the same for input channels and output channels.

Using the channel library

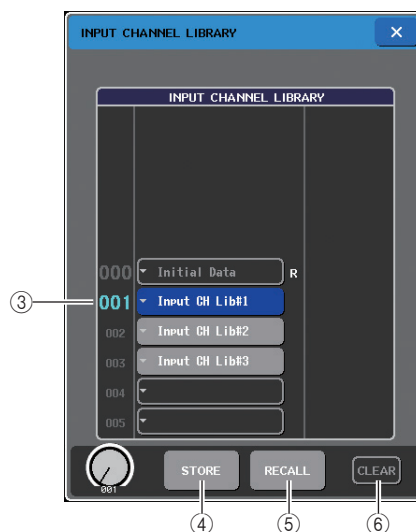
- 1 Use the [SEL] keys to select the channel whose settings you want to manage.
- 2 Press an encoder of the SELECTED CHANNEL section to access the SELECTED CHANNEL VIEW screen.



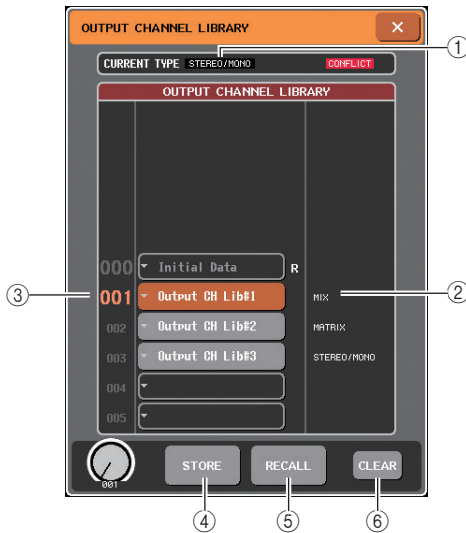
- 3 Press the LIBRARY tool button to access the INPUT CHANNEL LIBRARY window / OUTPUT CHANNEL LIBRARY window.

The library window contains the following items.

[INPUT CHANNEL LIBRARY]



[OUTPUT CHANNEL LIBRARY]



- ① **CURRENT TYPE (OUTPUT CHANNEL LIBRARY only)**
Displays the type of channel selected by the [SEL] key.
- ② **Library type (OUTPUT CHANNEL LIBRARY only)**
Displays the type of channel for the library item in the list.

NOTE

- For the output channel library, if the type of channel selected by the [SEL] key differs from the type of channel selected in the list, an indication of "CONFLICT" is shown at the right of CURRENT TYPE. Recall can be executed even if the "CONFLICT" indication is shown, but since the constituent parameters will be different, parameters that do not exist in the library will be set to their default values.

- ③ **Library list**
Selects the library item that will be the object of the operation. The selected library item will move to the center, and will be highlighted.
- ④ **STORE button**
Stores the settings of the currently selected channel into the selected location of the list. When you press this button, the LIBRARY STORE window will appear, allowing you to name the settings.
- ⑤ **RECALL button**
Recalls the settings shown in the list into the currently selected channel.
- ⑥ **CLEAR button**
Clears (deletes) the library item selected in the list. When you press this button, a dialog box will ask you to confirm the Clear operation.

4 By turning any one of the multifunction encoders, move the highlighted line in the list to select the library number you want to store, recall, or clear.

5 Press the STORE button, RECALL button, or CLEAR button.

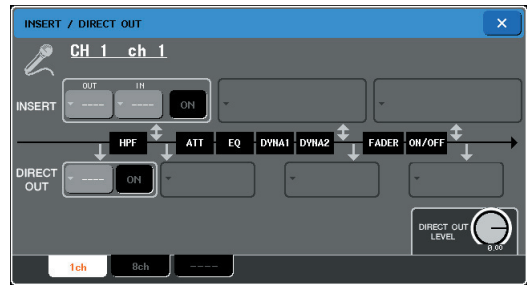
The rest of the steps are the same as for other libraries.

NOTE

- If you recall to a channel that is channel-linked, linking will be cancelled for the recalled channel.

POST ON added as an insert / direct out position

You can now select POST ON (immediately after the fader and [ON] key) as the insert or direct output position for input/output channels.



Insert is automatically turned on/off when GEQ insertion is enabled or cancelled

If a rack in which a GEQ is mounted is specified as the insert-out or insert-in, the other patch point will automatically be assigned to the same rack. At the same time, insertion is now automatically turned on. Additionally, if you defeat the insert-out or insert-in of a rack in which a GEQ is mounted, the other patch point will automatically be defeated, and insertion will automatically be turned off.

Changed minimum value of the GATE threshold level

The minimum threshold level for an input channel GATE is now -72 dB.



Channel link level differences maintained, and can temporarily defeated

When you enable channel link, HA gain and fader operations will now be linked while maintaining the level difference between channels of the link group.

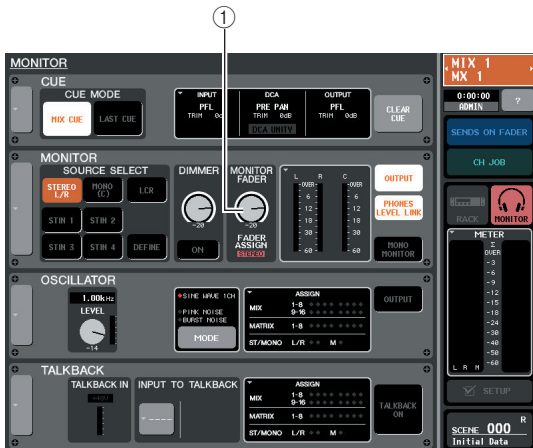
● Temporarily defeating link

For parameters (HA gain and fader) that preserve their relative level differences when linked, you can temporarily defeat linking for all linked channels, for example when you need to adjust the level balance between channels of a link group. Hold down the [SEL] key of the channel whose balance you want to adjust, and operate the parameter that you want to modify. While you're holding down the [SEL] key, the HA gain and fader will not be linked. (However, temporary unlinking is not possible during the fade that occurs when a scene memory is recalled.)

Using the STEREO/MONO MASTER fader to adjust the monitor output level

A monitor fader has been added to the monitor output level control, allowing you to use the STEREO MASTER fader / MONO MASTER fader to control the level. You can now also use the [ON] key of the MONO channel and STEREO channel to turn the monitor output on/off. A new MONITOR FADER field has been added in the MONITOR screen and the MONITOR popup window.

[MONITOR screen]



[MONITOR popup window]



① MONITOR FADER LEVEL

Indicates the current monitor fader.

② FADER ASSIGN MODE button

Each time you press this button of the MONITOR popup window, you will alternate between NONE → STEREO → MONO → NONE.

If you select STEREO, you'll be able to use the top panel STEREO MASTER fader to control the monitor fader. You can also use the [ON] key located above the STEREO MASTER fader to turn the monitor output on/off.

If you select MONO, you'll be able to use the top panel MONO MASTER fader to control the monitor fader. You can also use the [ON] key located above the MONO MASTER fader to turn the monitor output on/off.

NOTE

- The monitor fader and MONITOR LEVEL knob are located in series. The top panel MONITOR LEVEL knob is still valid even when you're using this function to adjust the monitor level. The monitor signal will not be output if the MONITOR LEVEL knob is set to the minimum position.
- The [ON] key of the STEREO channel or MONO channel will operate in tandem with the MONITOR screen's OUTPUT button. The PHONES OUT jack will always output the monitor signal, regardless of whether the OUTPUT button is on or off.
- You can also assign a user-definable key to switch the FADER ASSIGN MODE setting (p. 7).
- The MONITOR button of the function access area is shown in red for STEREO or in yellow for MONO, depending on the FADER ASSIGN MODE setting.

Using the Global Paste function to change multiple scenes in a single operation

“Global Paste” is a function that lets you copy and paste settings of the desired channel or parameter from the current scene to scene data in memory (multiple selections are allowed). This is a convenient way in which changes to the current scene can be applied to multiple scenes that have already been stored.

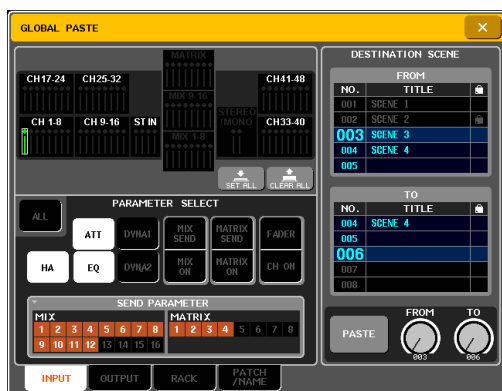
Using the Global Paste function

NOTE

- The Global Paste function can be used only by users for whom SCENE LIST STORE/SORT is turned on in their user level settings.

- In the function access area, press the **SCENE** field to access the **SCENE LIST** window.
- In the lower right of the **SCENE LIST** window, press the **GLOBAL PASTE** button to access the **GLOBAL PASTE** window.

In this screen you can select the copy-source channels/parameters and specify the paste-destination scene data.



- Use the tabs to select the items to be copied from the following choices.

INPUT	Input channels and parameters
OUTPUT	Output channels and parameters
RACK	RACK 1–8
PATCH/NAME	Input/output patching and channel names

- Select the copy-source channels and parameters.

The display will depend on the tab you selected. You cannot select different parameters for each channel.

Use the top panel [SEL] keys to select a channel.

● INPUT tab

Select the input channel in the upper left, and its parameters in the lower left.

You can select the following parameters.

ALL	All input channel parameters (except INPUT PATCH and INPUT NAME)
HA	Settings for the head amp assigned to the corresponding input channel
ATT	Attenuator
EQ	EQ settings
DYNA1	Dynamics 1 settings (including KEY IN SOURCE and KEY IN FILTER)
DYNA2	Dynamics 2 settings (including KEY IN SOURCE)
MIX ON/SEND	Send to MIX bus on/off, send level, pan, and PRE/POST
MTRX ON/SEND	Send to MATRIX bus on/off, send level, pan, and PRE/POST
FADER	Fader level
CH ON	[ON] key on/off status

● OUTPUT tab

Select the output channel in the upper left, and its parameters in the lower left.

You can select the following parameters.

ALL	All output channel parameters (except OUTPUT PATCH and OUTPUT NAME)
ATT	Attenuator
EQ	EQ settings
DYNA1	Dynamics 1 settings (including KEY IN SOURCE and KEY IN FILTER)
MATRIX ON	Send to MATRIX bus on/off (only for MIX and STEREO/MONO channels)
MATRIX SEND	Send level to MATRIX bus, pan, PRE/POST (only for MIX and STEREO/MONO channels)
FADER	Fader level
CH ON	[ON] key on/off status
WITH MIX SEND	Selects whether the send level sent from input channels to the selected MIX bus will be included in the pasted data.
WITH MATRIX SEND	Selects whether the send level sent from input channels to the selected MATRIX bus will be included in the pasted data.

● RACK tab

Select RACK 1–8.

● PATCH/NAME tab

Select from INPUT PATCH, INPUT NAME, OUTPUT PATCH, and OUTPUT NAME.

- In the **DESTINATION SCENE** area, select the range of paste-destination scenes.

The data will be pasted to all scenes in the range between FROM and TO. Use multi-function encoder 7 to select FROM, and multi-function encoder 8 to select TO.

- Press the **PASTE** button.

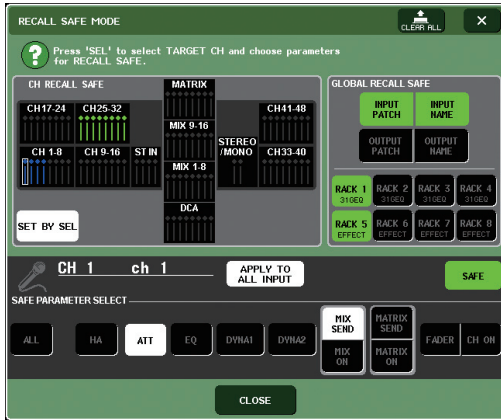
The selected items of the current scene will be pasted to the scene(s) in memory.

A progress bar will be shown while the Paste operation is being performed.

The STOP button is shown while the Paste function is being executed; you can stop by pressing this button. In this case, the Paste function will have been partially executed, and the data cannot be restored to its previous state.

Recall Safe settings made independently for the attenuator

Recall Safe for the attenuator can now be selected independently of EQ.



In addition, the stereo, LINK, RECALL SAFE, and USER LEVEL behavior of other mixing parameters has also been changed. For details, refer to the "Mixing parameter operation applicability" on the back of the included block diagram.

Assigning user-defined keys from M7CL V2 Editor

M7CL V2 Editor now allows you to make the same user-defined key settings as on the console itself. For details on how to make these settings, refer to the M7CL V2 Editor Owner's manual.

Functions that can be assigned to user-defined keys

Function	PARAMETER 1	PARAMETER 2	Explanation
MONITOR ON MASTER (FADER ASSIGN MODE)	STEREO MASTER	LATCH	The key will switch whether the STEREO MASTER fader will be used to control the monitor level
		UNLATCH	The STEREO MASTER fader will be used to control the monitor level while the key is held down
	MONO MASTER	LATCH	The key will switch whether the MONO MASTER fader will be used to control the monitor level
		UNLATCH	The MONO MASTER fader will be used to control the monitor level while the key is held down
SENDS ON FADER	MATRIX 1-8	–	Switches the MATRIX ON FADER function on/off for the selected MATRIX
	MIX ON FADER	–	Switches the MIX ON FADER function on/off
	MATRIX ON FADER	–	Switches the MATRIX ON FADER function on/off
	SENDS ON FADER	–	Switches the SENDS ON FADER function on/off
M7CL EDITOR CONTROL	LIBRARY	INPUT CH	Opens the M7CL V2 Editor's Library window - INPUT CH tab
		OUTPUT CH	Opens the M7CL V2 Editor's Library window - OUTPUT CH tab
HOME	SELECTED CH VIEW	–	Displays the SELECTED CHANNEL VIEW screen
	OVERVIEW	–	Displays the OVERVIEW screen
	MOMENTARY	–	Each press of the key will alternately display the SELECTED CHANNEL VIEW screen and the OVERVIEW screen

Compatibility of created data

Data created with firmware 2.0 (scenes, library data, setup data, etc.) cannot be loaded into an M7CL console that is using firmware V1 (any version prior to V2.0). However, data created on an M7CL with firmware V1 can be loaded into an M7CL that is using firmware V2.0.

ПРЕДУПРЕЖДЕНИЕ

- Не держите устройство там, где оно может попасть под дождь, а также рядом с водой, в сырых и влажных помещениях; не ставьте на него емкости с жидкостью, которая может разлиться и попасть в отверстия.
- Подключайте только к электросети с соответствующим напряжением и защитным заземлением. Неправильное заземление может вызвать поражение электрическим током.

ВНИМАНИЕ!

- При установке инструмента убедитесь в том, что используемая электрическая розетка легко доступна. При возникновении какого-либо сбоя или неисправности немедленно отключите питание инструмента и отсоедините кабель питания от электросети. Даже если питание устройства отключено, инструмент продолжает в минимальном количестве потреблять электроэнергию. Если устройство не используется в течение длительного времени, отсоедините кабель питания от электросети.

EN



Information for Users on Collection and Disposal of Old Equipment

This symbol on the products, packaging, and/or accompanying documents means that used electrical and electronic products should not be mixed with general household waste.

For proper treatment, recovery and recycling of old products, please take them to applicable collection points, in accordance with your national legislation and the Directives 2002/96/EC.

By disposing of these products correctly, you will help to save valuable resources and prevent any potential negative effects on human health and the environment which could otherwise arise from inappropriate waste handling.

For more information about collection and recycling of old products, please contact your local municipality, your waste disposal service or the point of sale where you purchased the items.

[For business users in the European Union]

If you wish to discard electrical and electronic equipment, please contact your dealer or supplier for further information.

[Information on Disposal in other Countries outside the European Union]

This symbol is only valid in the European Union. If you wish to discard these items, please contact your local authorities or dealer and ask for the correct method of disposal.

DE



Verbraucherinformation zur Sammlung und Entsorgung alter Elektrogeräte

Befindet sich dieses Symbol auf den Produkten, der Verpackung und/oder beiliegenden Unterlagen, so sollten benutzte elektrische Geräte nicht mit dem normalen Haushaltsabfall entsorgt werden.

In Übereinstimmung mit Ihren nationalen Bestimmungen und den Richtlinien 2002/96/EC, bringen Sie alte Geräte bitte zur fachgerechten Entsorgung, Wiederaufbereitung und Wiederverwendung zu den entsprechenden Sammelstellen.

Durch die fachgerechte Entsorgung der Elektrogeräte helfen Sie, wertvolle Ressourcen zu schützen und verhindern mögliche negative Auswirkungen auf die menschliche Gesundheit und die Umwelt, die andernfalls durch unsachgerechte Müllentsorgung auftreten könnten.

Für weitere Informationen zum Sammeln und Wiederaufbereiten alter Elektrogeräte, kontaktieren Sie bitte Ihre örtliche Stadt- oder Gemeindeverwaltung, Ihren Abfallentsorgungsdienst oder die Verkaufsstelle der Artikel.

[Information für geschäftliche Anwender in der Europäischen Union]

Wenn Sie Elektrogeräte ausrangieren möchten, kontaktieren Sie bitte Ihren Händler oder Zulieferer für weitere Informationen.

[Entsorgungsinformation für Länder außerhalb der Europäischen Union]

Dieses Symbol gilt nur innerhalb der Europäischen Union. Wenn Sie solche Artikel ausrangieren möchten, kontaktieren Sie bitte Ihre örtlichen Behörden oder Ihren Händler und fragen Sie nach der sachgerechten Entsorgungsmethode.

FR

Information concernant la Collecte et le Traitement des déchets d'équipements électriques et électroniques.



Le symbole sur les produits, l'emballage et/ou les documents joints signifie que les produits électriques ou électroniques usagés ne doivent pas être mélangés avec les déchets domestiques habituels. Pour un traitement, une récupération et un recyclage appropriés des déchets d'équipements électriques et électroniques, veuillez les déposer aux points de collecte prévus à cet effet, conformément à la réglementation nationale et aux Directives 2002/96/EC.

En vous débarrassant correctement des déchets d'équipements électriques et électroniques, vous contribuerez à la sauvegarde de précieuses ressources et à la prévention de potentiels effets négatifs sur la santé humaine qui pourraient advenir lors d'un traitement inapproprié des déchets.

Pour plus d'informations à propos de la collecte et du recyclage des déchets d'équipements électriques et électroniques, veuillez contacter votre municipalité, votre service de traitement des déchets ou le point de vente où vous avez acheté les produits.

[Pour les professionnels dans l'Union Européenne]

Si vous souhaitez vous débarrasser des déchets d'équipements électriques et électroniques veuillez contacter votre vendeur ou fournisseur pour plus d'informations.

[Information sur le traitement dans d'autres pays en dehors de l'Union Européenne]

Ce symbole est seulement valable dans l'Union Européenne. Si vous souhaitez vous débarrasser de déchets d'équipements électriques et électroniques, veuillez contacter les autorités locales ou votre fournisseur et demander la méthode de traitement appropriée.

ES

Información para Usuarios sobre Recolección y Disposición de Equipamiento Viejo



Este símbolo en los productos, embalaje, y/o documentación que se acompañe significa que los productos electrónicos y eléctricos usados no deben ser mezclados con desechos hogareños corrientes.

Para el tratamiento, recuperación y reciclado apropiado de los productos viejos, por favor llévelos a puntos de recolección aplicables, de acuerdo a su legislación nacional y las directivas 2002/96/EC.

Al disponer de estos productos correctamente, ayudará a ahorrar recursos valiosos y a prevenir cualquier potencial efecto negativo sobre la salud humana y el medio ambiente, el cual podría surgir de un inapropiado manejo de los desechos.

Para mayor información sobre recolección y reciclado de productos viejos, por favor contacte a su municipio local, su servicio de gestión de residuos o el punto de venta en el cual usted adquirió los artículos.

[Para usuarios de negocios en la Unión Europea]

Si usted desea deshacerse de equipamiento eléctrico y electrónico, por favor contacte a su vendedor o proveedor para mayor información.

[Información sobre la Disposición en otros países fuera de la Unión Europea]

Este símbolo sólo es válido en la Unión Europea. Si desea deshacerse de estos artículos, por favor contacte a sus autoridades locales y pregunte por el método correcto de disposición.

IT

Informazioni per gli utenti sulla raccolta e lo smaltimento di vecchia attrezzatura



Questo simbolo sui prodotti, sull'imballaggio, e/o sui documenti che li accompagnano significa che i prodotti elettrici e elettroniche non dovrebbero essere mischiati con i rifiuti domestici generici.

Per il trattamento, recupero e riciclaggio appropriati di vecchi prodotti, li porti, prego, ai punti di raccolta appropriati, in accordo con la Sua legislazione nazionale e le direttive 2002/96/CE.

Smaltendo correttamente questi prodotti, Lei aiuterà a salvare risorse preziose e a prevenire alcuni potenziali effetti negativi sulla salute umana e l'ambiente, che altrimenti potrebbero sorgere dal trattamento improprio dei rifiuti.

Per ulteriori informazioni sulla raccolta e il riciclaggio di vecchi prodotti, prego contatti la Sua amministrazione comunale locale, il Suo servizio di smaltimento dei rifiuti o il punto vendita dove Lei ha acquistato gli articoli.

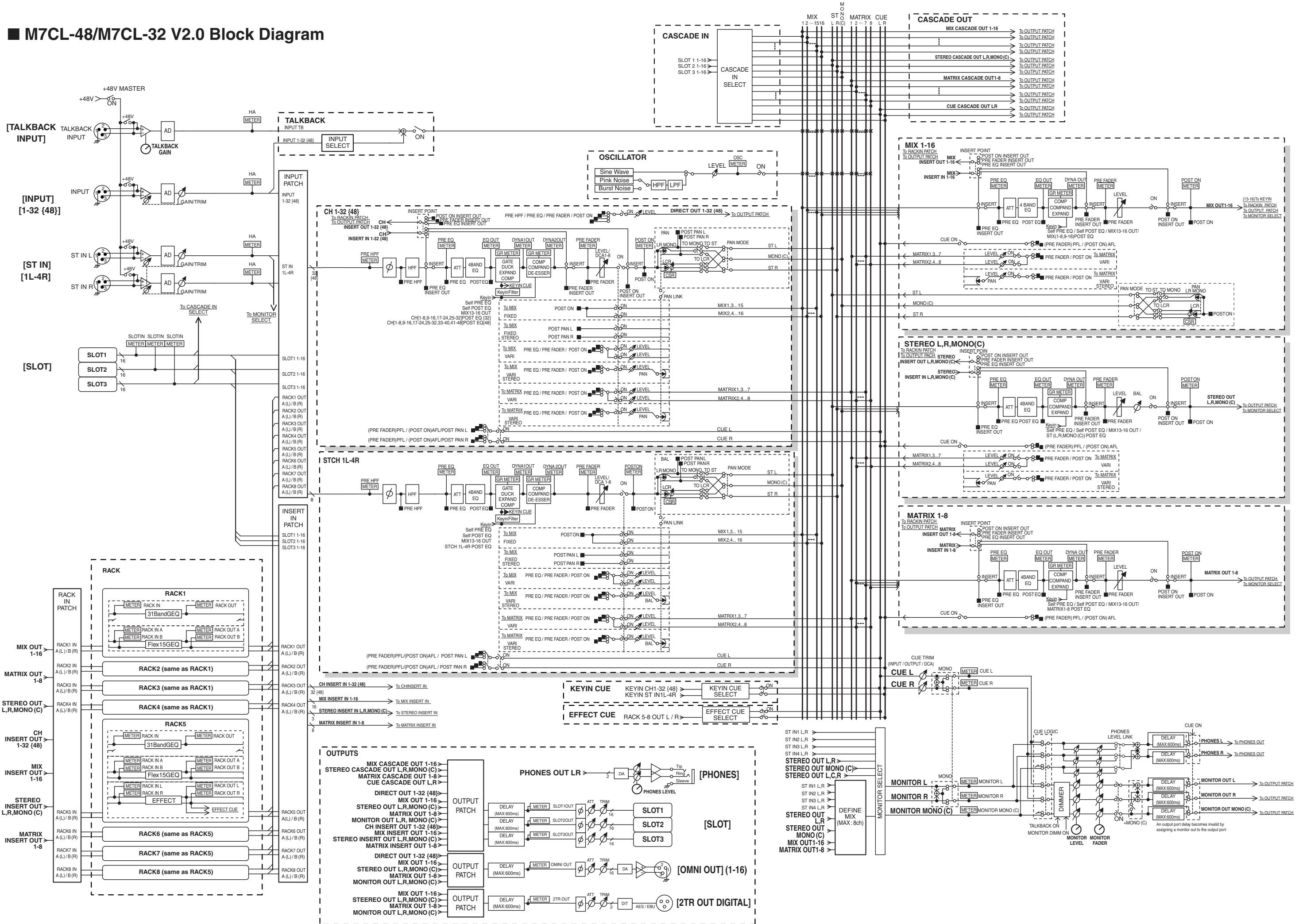
[Per utenti imprenditori dell'Unione europea]

Se Lei desidera disfarsi di attrezzatura elettrica ed elettronica, prego contatti il Suo rivenditore o fornitore per ulteriori informazioni.

[Informazioni sullo smaltimento negli altri Paesi al di fuori dell'Unione europea]

Questo simbolo è valido solamente nell'Unione europea. Se Lei desidera disfarsi di questi articoli, prego contatti le Sue autorità locali o il rivenditore e richiedi la corretta modalità di smaltimento.

M7CL-48/M7CL-32 V2.0 Block Diagram



Mixing parameter operation applicability

This table indicates how the behaviors of each of the input channel and output channel parameters are affected by Stereo, Link, Recall Safe, and User Level settings.

Input Channels

Parameter	Stereo *1	CHANNEL LINK	RECALL SAFE	USER LEVEL	Channel Library
HA	Gain	O	INPUT HA	INPUT HA	O
	Phase		INPUT HA	INPUT HA	O
	+48V		INPUT HA	INPUT HA	O
Name, Icon			INPUT NAME	INPUT NAME	O
Insert	On		INPUT ALL	INPUT PROCESSING	O
	Point		INPUT ALL	INPUT PROCESSING	O
Direct Out	On, Level		INPUT ALL	INPUT PROCESSING	O
	Point		INPUT ALL	INPUT PROCESSING	O
Att	O	INPUT EQ	INPUT ATT	INPUT PROCESSING	O
HPF	O	INPUT EQ	INPUT EQ	INPUT PROCESSING	O
EQ	O	INPUT EQ	INPUT EQ	INPUT PROCESSING	O
Dynamics1	Key-In Source		INPUT DYNA1	INPUT PROCESSING	
	Key-In Filter	O	INPUT DYNAMICS1	INPUT PROCESSING	O
	Others	O	INPUT DYNAMICS1	INPUT PROCESSING	O
Dynamics2	Key-In Source		INPUT DYNA2	INPUT PROCESSING	
	Others	O	INPUT DYNAMICS2	INPUT PROCESSING	O
To Mix	On	O	INPUT MIX ON *2	INPUT FADER/ON *4	O
	Level	O	INPUT MIX SEND *2	INPUT FADER/ON *4	O
	Pan/Balance	O		INPUT FADER/ON *4	O
	Pre/Post	O	INPUT MIX SEND *2	INPUT MIX SEND	INPUT PROCESSING
To Matrix	On	O	INPUT MATRIX ON *3	INPUT FADER/ON *4	O
	Level	O	INPUT MATRIX SEND *3	INPUT FADER/ON *4	O
	Pan/Balance	O		INPUT FADER/ON *4	O
	Pre/Post	O	INPUT MATRIX SEND *3	INPUT MATRIX SEND	INPUT PROCESSING
To Stereo/ Mono	O		INPUT ALL	INPUT PROCESSING	O
Pan/ Balance	O		INPUT ALL	INPUT FADER/ON	O
LCR	On	O	INPUT ALL	INPUT PROCESSING	O
	CSR	O	INPUT ALL	INPUT PROCESSING	O
On	O	INPUT ON	INPUT ON	INPUT FADER/ON	O
Fader	O	INPUT FADER	INPUT FADER	INPUT FADER/ON	O
Mute Assign	O		INPUT ALL	MUTE GROUP ASSIGN	O
DCA Assign	O		INPUT ALL	DCA GROUP ASSIGN	O
Cue	O				
Mute Safe	O				
Recall Safe	O				
Fade Time, On	O			STORE	O

Mix Channels

Parameter	Linked in stereo mode	RECALL SAFE	USER LEVEL	Channel Library	
Name, Icon		OUTPUT NAME	OUTPUT NAME	O	
Insert	On	O	MIX ALL	MIX PROCESSING	O
	Point	O	MIX ALL	MIX PROCESSING	O
Att	O	MIX ATT	MIX PROCESSING	O	
EQ	O	MIX EQ	MIX PROCESSING	O	
Dynamics1	Key-In Source		MIX DYNA1	MIX PROCESSING	
	Others	O	MIX DYNA1	MIX PROCESSING	O
To Matrix	On	O	MIX to MATRIX ON	MIX FADER/ON *4	O
	Level	O *5	MIX to MATRIX SEND	MIX FADER/ON *4	O
	Pan/Balance	O	MIX to MATRIX SEND	MIX FADER/ON *4	O
	Pre/Post	O	MIX to MATRIX SEND	MIX PROCESSING	O
To Stereo/Mono	O	MIX ALL	MIX PROCESSING	O	
Pan/Balance	O	MIX ALL	MIX FADER/ON	O	
LCR	On	O	MIX ALL	MIX PROCESSING	O
	CSR	O	MIX ALL	MIX PROCESSING	O
On	O	MIX ON	MIX FADER/ON	O	
Fader	O	MIX FADER	MIX FADER/ON	O	
From Input	On		WITH MIX SEND	WITH MIX SEND *4	
	Level		WITH MIX SEND	WITH MIX SEND *4	
	Pan		WITH MIX SEND	WITH MIX SEND *4	
	Pre/Post		WITH MIX SEND	WITH MIX SEND *4	
Mute Assign	O	MIX ALL	MUTE ASSIGN	O	
Cue	O				
Mute Safe	O				
Recall Safe	O				
Fade Time, On	O		STORE	O	

Matrix Channels

Parameter	Linked in stereo mode	RECALL SAFE	USER LEVEL	Channel Library	
Name, Icon		OUTPUT NAME	OUTPUT NAME	O	
Insert	On	O	MATRIX ALL	MATRIX PROCESSING	O
	Point	O	MATRIX ALL	MATRIX PROCESSING	O
Att	O	MATRIX ATT	MATRIX PROCESSING	O	
EQ	O	MATRIX EQ	MATRIX PROCESSING	O	
Dynamics1	Key-In Source		MATRIX DYNA1	MATRIX PROCESSING	
	Others	O	MATRIX DYNA1	MATRIX PROCESSING	O
Balance	O	MATRIX ALL	MATRIX FADER/ON	O	
On	O	MATRIX ON	MATRIX FADER/ON	O	
Fader	O	MATRIX FADER	MATRIX FADER/ON	O	
From Input From Mix From Stereo/Mono	On		WITH MATRIX SEND	WITH MATRIX SEND *4	
	Level		WITH MATRIX SEND	WITH MATRIX SEND *4	
	Pan		WITH MATRIX SEND	WITH MATRIX SEND *4	
	Pre/Post		WITH MATRIX SEND	WITH MATRIX SEND *4	
Mute Assign	O	MATRIX ALL	MUTE ASSIGN	O	
Cue	O				
Mute Safe	O				
Recall Safe	O				
Fade Time, On	O		STORE	O	

STEREO, MONO Channels

Parameter	Linked on the STEREO channel	RECALL SAFE	USER LEVEL	Channel Library	
Name, Icon		OUTPUT NAME	OUTPUT NAME	O	
Insert	On	O	STEREO, MONO ALL	STEREO, MONO PROCESSING	O
	Point	O	STEREO, MONO ALL	STEREO, MONO PROCESSING	O
Att	O	STEREO, MONO ATT	STEREO, MONO PROCESSING	O	
EQ	O	STEREO, MONO EQ	STEREO, MONO PROCESSING	O	
Dynamics1	Key-In Source		STEREO, MONO DYNA1	STEREO, MONO PROCESSING	
	Others	O	STEREO, MONO DYNA1	STEREO, MONO PROCESSING	O
To Matrix	On	O	STEREO, MONO to MATRIX ON	STEREO, MONO FADER/ON *4	O
	Level	O *5	STEREO, MONO to MATRIX SEND	STEREO, MONO FADER/ON *4	O
	Pan/Balance	O	STEREO, MONO to MATRIX SEND	STEREO, MONO FADER/ON *4	O
	Pre/Post	O	STEREO, MONO to MATRIX SEND	STEREO, MONO PROCESSING	O
Balance	O	STEREO, MONO ALL	STEREO, MONO FADER/ON	O	
On	O	STEREO, MONO ON	STEREO, MONO FADER/ON	O	
Fader	O	STEREO, MONO FADER	STEREO, MONO FADER/ON	O	
Mute Assign	O	STEREO, MONO ALL	MUTE ASSIGN	O	
Cue	O				
Mute Safe	O				
Recall Safe	O				
Fade Time, On	O		STORE	O	

DCA

Parameter	RECALL SAFE	USER LEVEL
Name, Icon	DCA ALL	DCA MASTER ON
On	DCA LEVEL/ON	DCA MASTER ON
Fader	DCA LEVEL/ON	DCA MASTER ON
Fade Time, On		STORE

*1Linked parameters on ST IN Channels 1-4.

*2Applies to parameters for which the MIX channel 1_16 individual Send Parameter setting and the item in the table are both enabled.

*3Applies to parameters for which the MATRIX channel 1_8 individual Send Parameter setting and the item in the table are both enabled.

*4User operation is allowed if the send-source channel's "FADER/ON" is ON and the send-destination channel's "WITH SEND" is ON.

*5Linked if the send-destination channel is Stereo.



Yamaha Pro Audio global web site:
<http://www.yamahaproaudio.com/>
Yamaha Manual Library
<http://www.yamaha.co.jp/manual/>

U.R.G., Pro Audio & Digital Musical Instrument Division, Yamaha Corporation
© 2009 Yamaha Corporation

WS66170 906POCP1.3-01A0
Printed in Japan